

Centre International
de Hautes Études
Agronomiques
Méditerranéennes



International Center
for Advanced
Mediterranean
Agronomic Studies

Sede italiana

ISTITUTO AGRONOMICO MEDITERRANEO DI BARI

VOLUME 5

**DESIGN DOCUMENTS,
INCLUDING DRAWINGS**

Lot 3

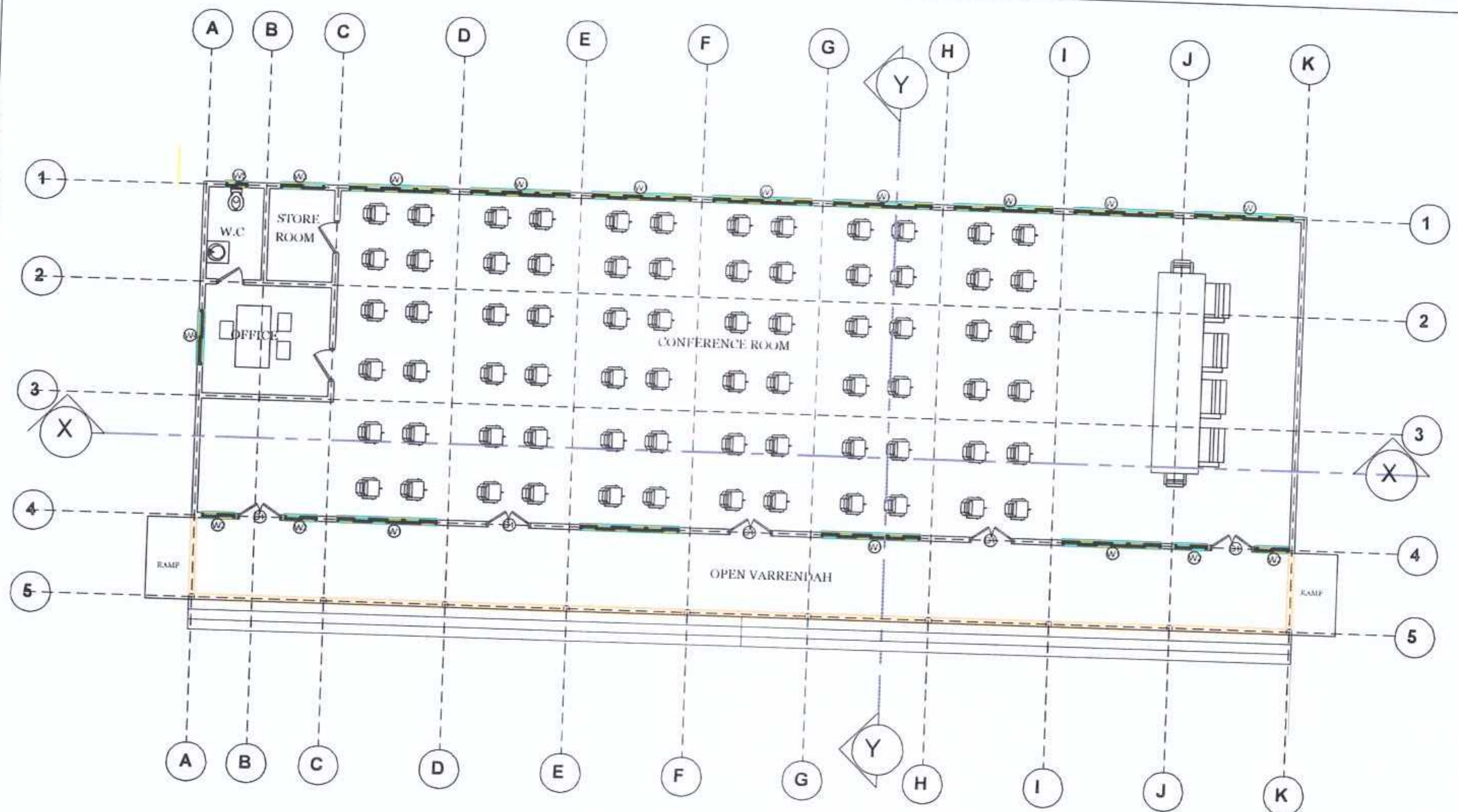


CIHEAM
BARI

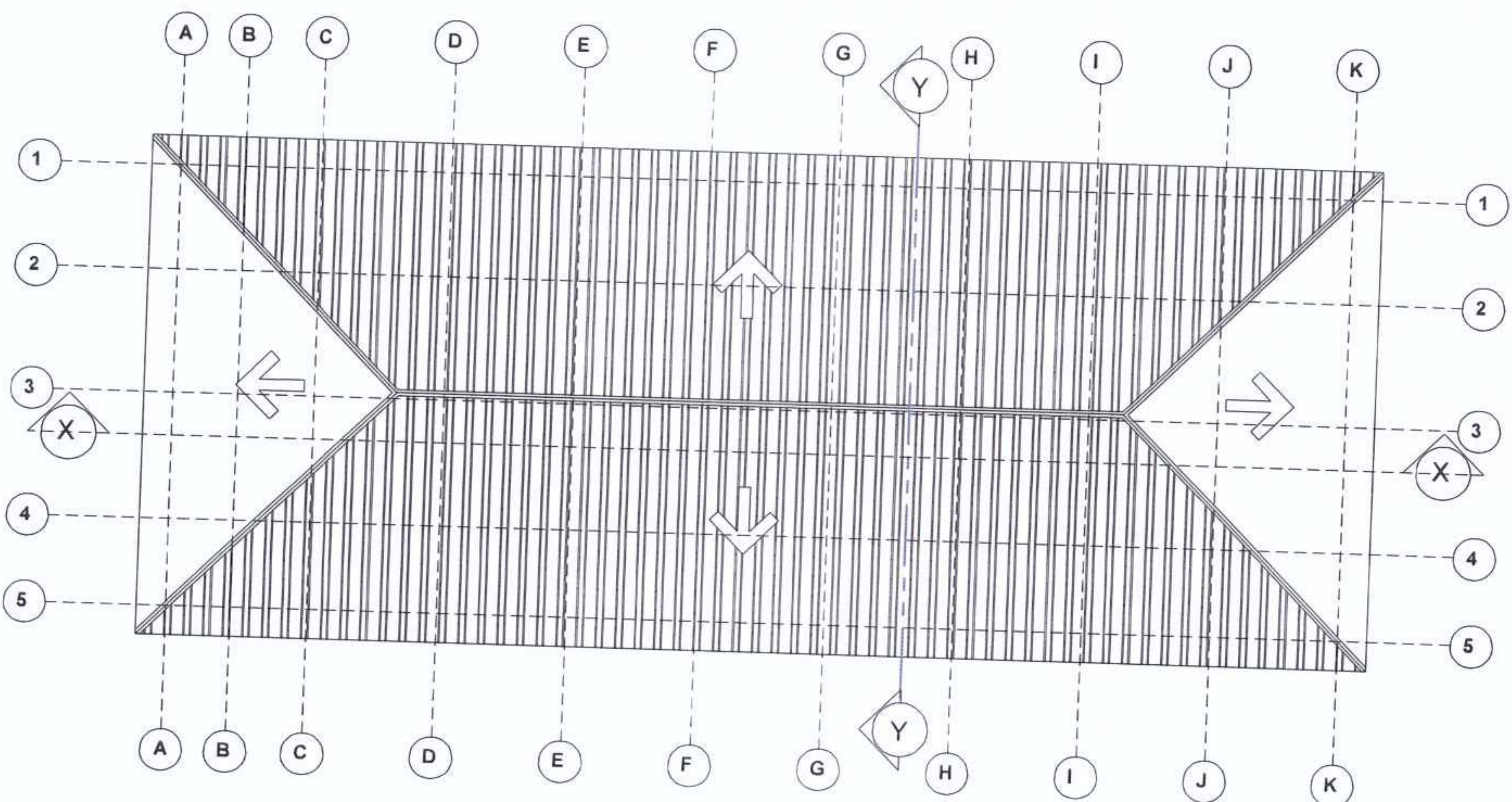
Centre International de Hautes Etudes Agronomiques Méditerranéennes

Mediterranean Agronomic Institute of Bari

Construction and rehabilitation works for community infrastructures **Conference room** Location - Aveyime-Battor, North Tongu District, Volta Region- Ghana - **Lot.3**



GROUND FLOOR PLAN



ROOF PLAN

Scale_1:200

[Handwritten signature]

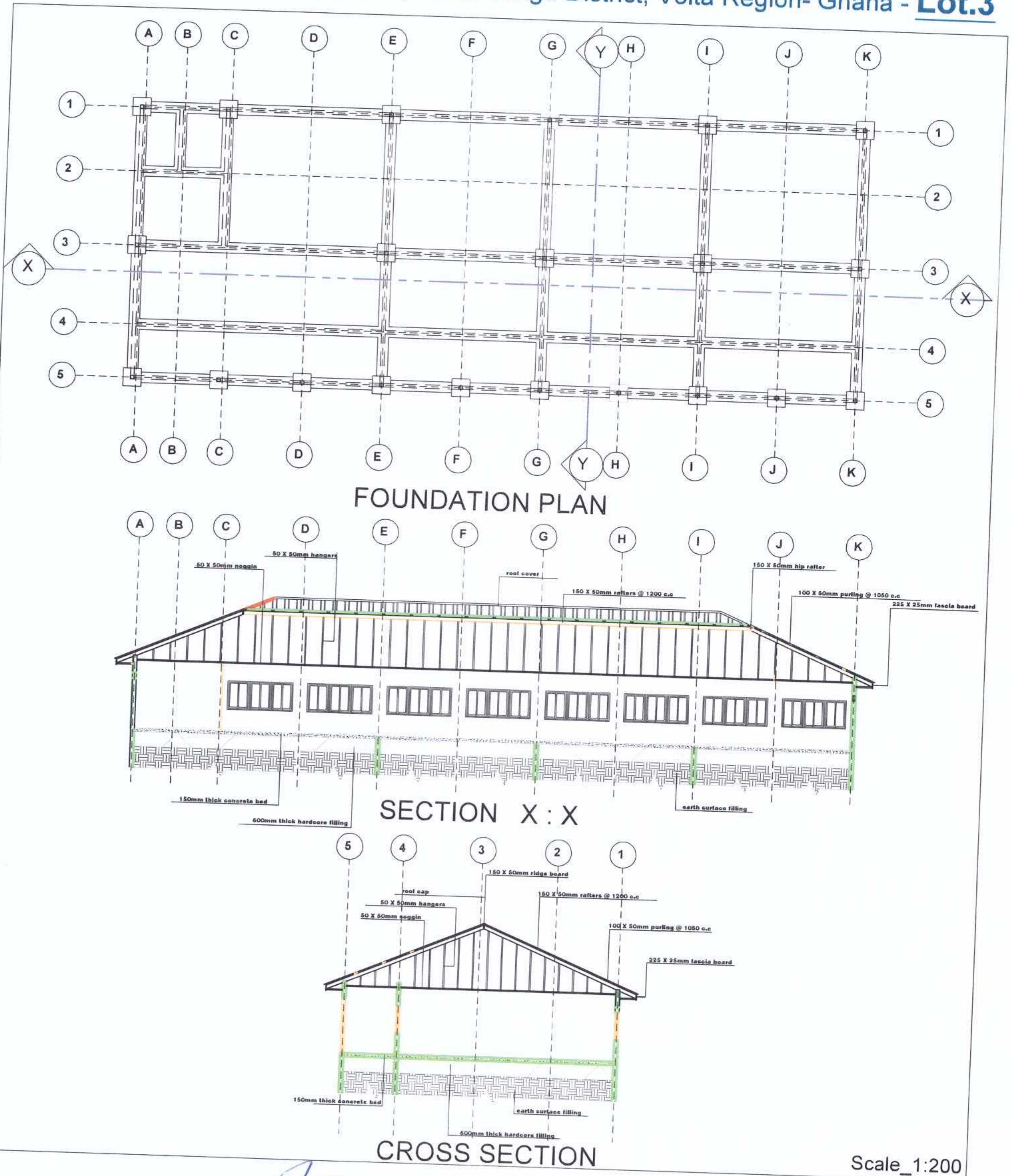


CIHEAM
BARI

Centre International de Hautes Etudes Agronomiques Méditerranéennes

Mediterranean Agronomic Institute of Bari

Construction and rehabilitation works for community infrastructures **Conference room** Location - Aveyime-Battor, North Tongu District, Volta Region- Ghana - **Lot.3**



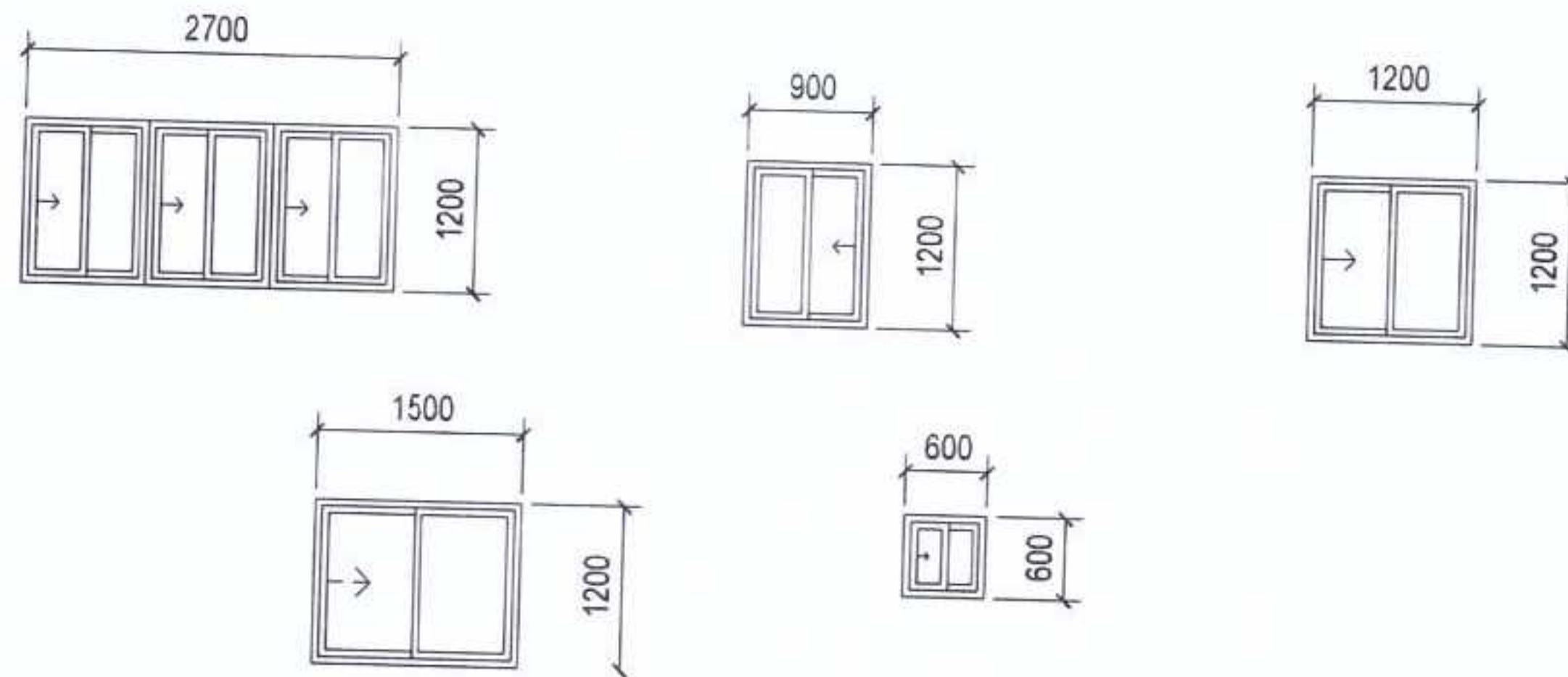


CIHEAM
BARI

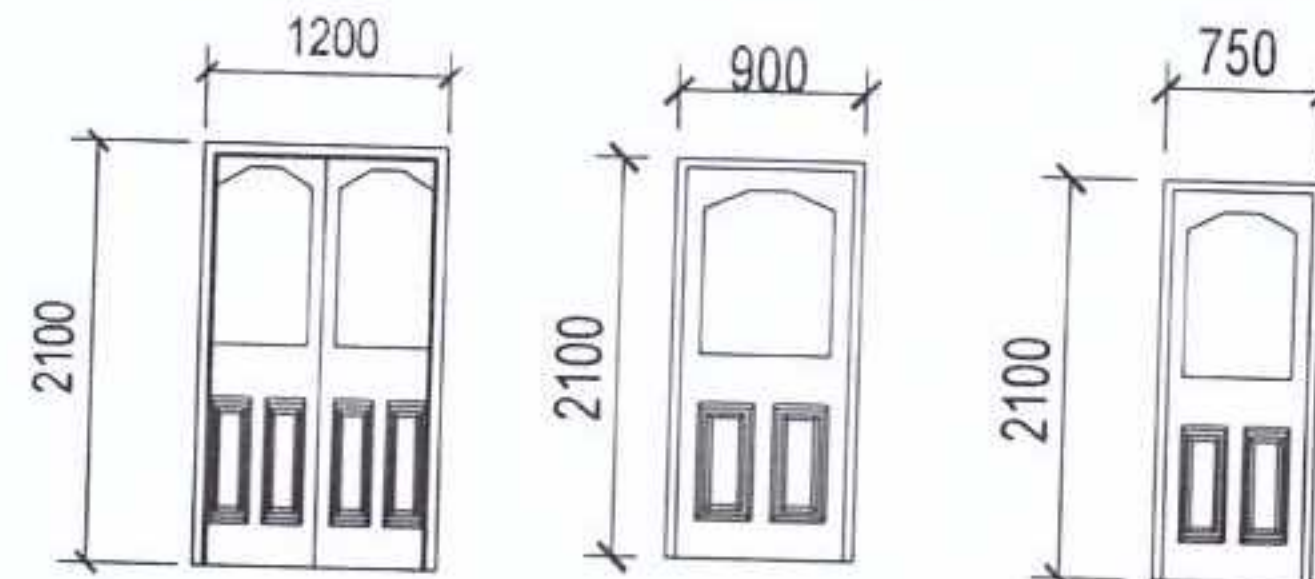
Centre International de Hautes Etudes Agronomiques Méditerranéennes

Mediterranean Agronomic Institute of Bari

Construction and rehabilitation works for community infrastructures **Conference room** Location - Aveyime-Battor, North Tongu District, Volta Region- Ghana - **Lot. 3**



WINDOW					
	(W1)	(W2)	(W3)	(W3)	(W4)
TYPE	CASEMENT WINDOW	CASEMENT WINDOW	CASEMENT WINDOW	CASEMENT WINDOW	CASEMENT WINDOW
LOCATION	CONFERENCE ROOM	CONFERENCE ROOM	STORE	OFFICE	WASHROOM & STORE
QTY	12 NO.	4NO.	1NO.	1NO.	1NO.



DOOR		
	(D1)	(D2)
TYPE	CHINA DOOR	PANEL DOOR
LOCATION	CONFERENCE ROOM	OFFICE
QTY	5NO.	1NO.

	(D3)
TYPE	PANEL DOOR
LOCATION	WASHROOM & STORE
QTY	2NO.

DOOR AND WINDOW SCHEDULE

Scale_1:100

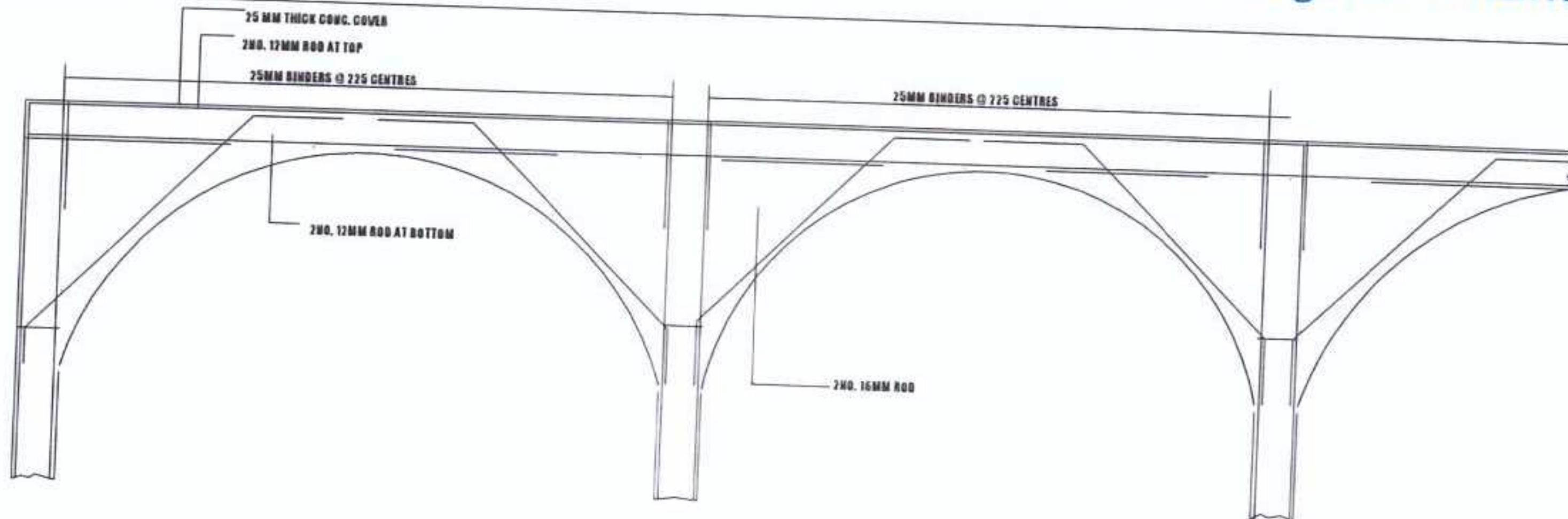


CIHEAM
BARI

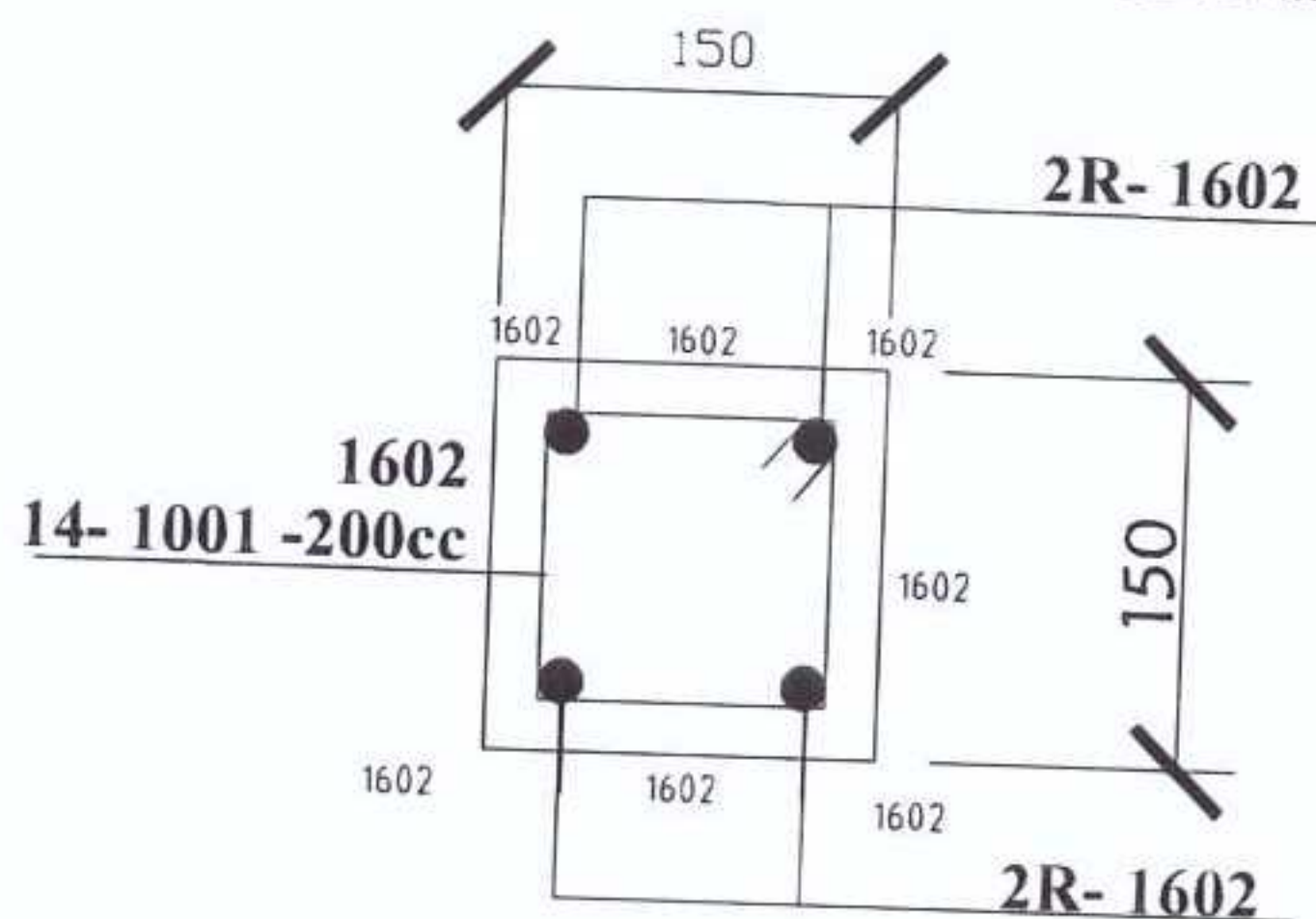
Centre International de Hautes Etudes Agronomiques Méditerranéennes

Mediterranean Agronomic Institute of Bari

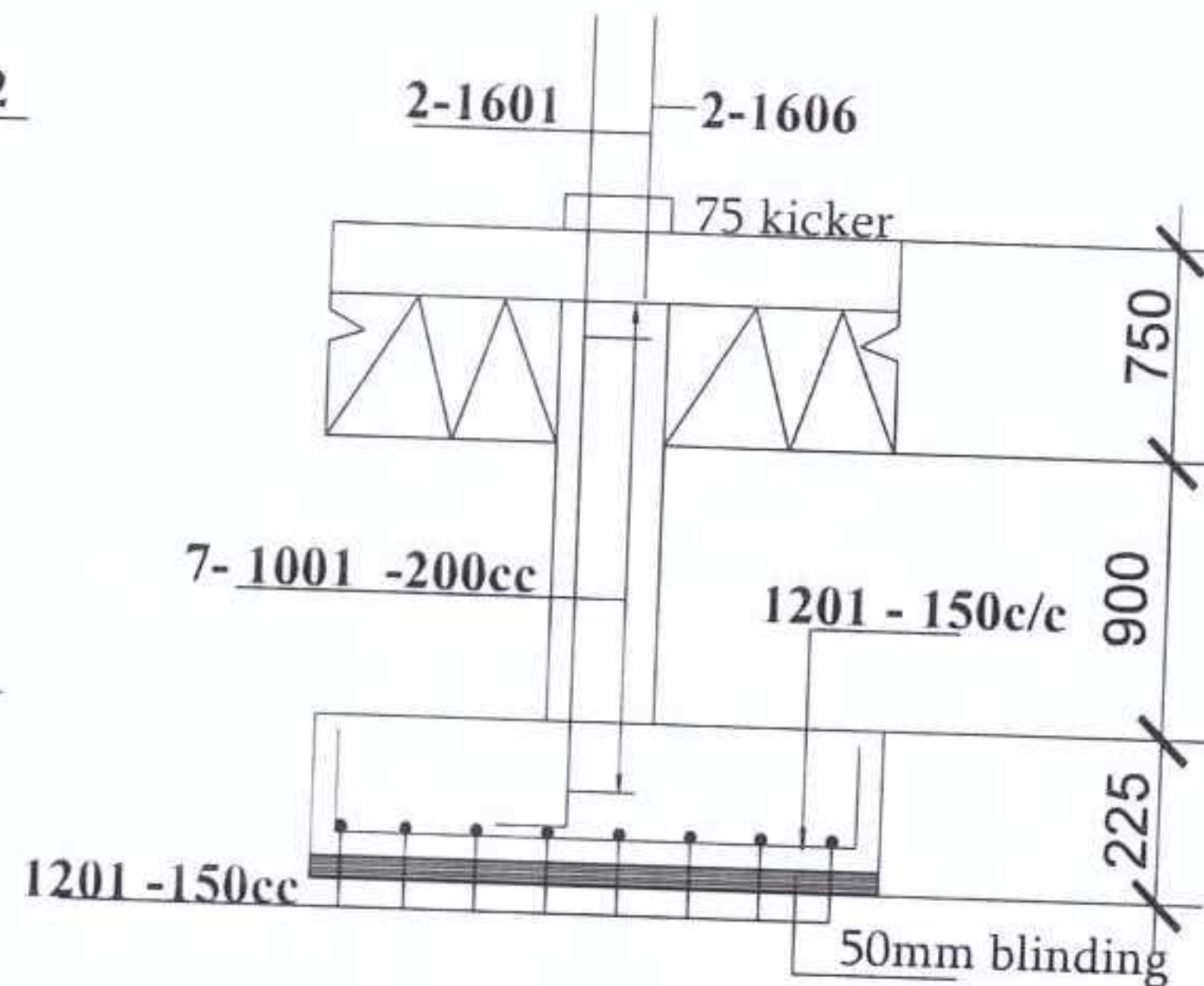
Construction and rehabilitation works for community infrastructures Conference room Location - Aveyime-Battor, North Tongu District, Volta Region- Ghana - Lot. 3



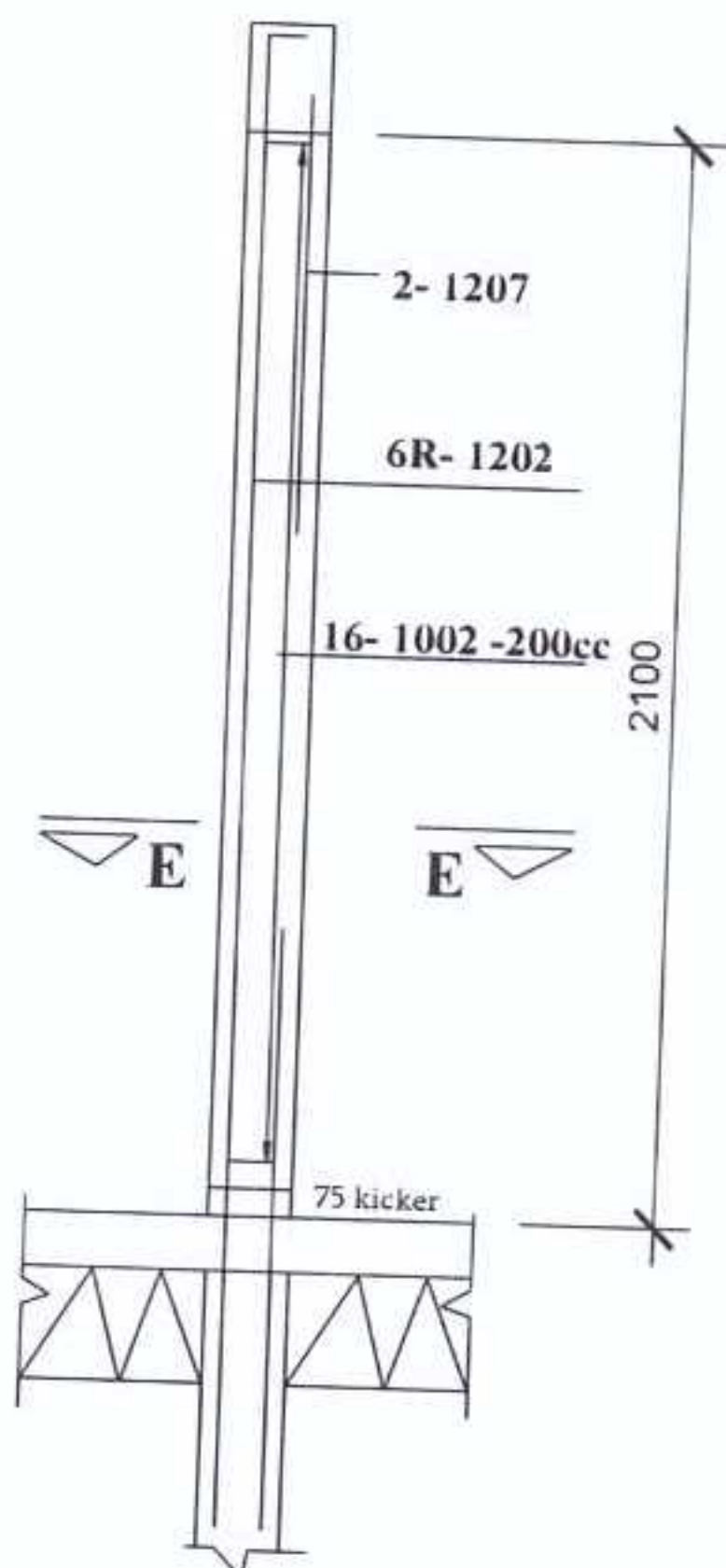
DETAIL OF R. C. BEAM & ARCHWAY



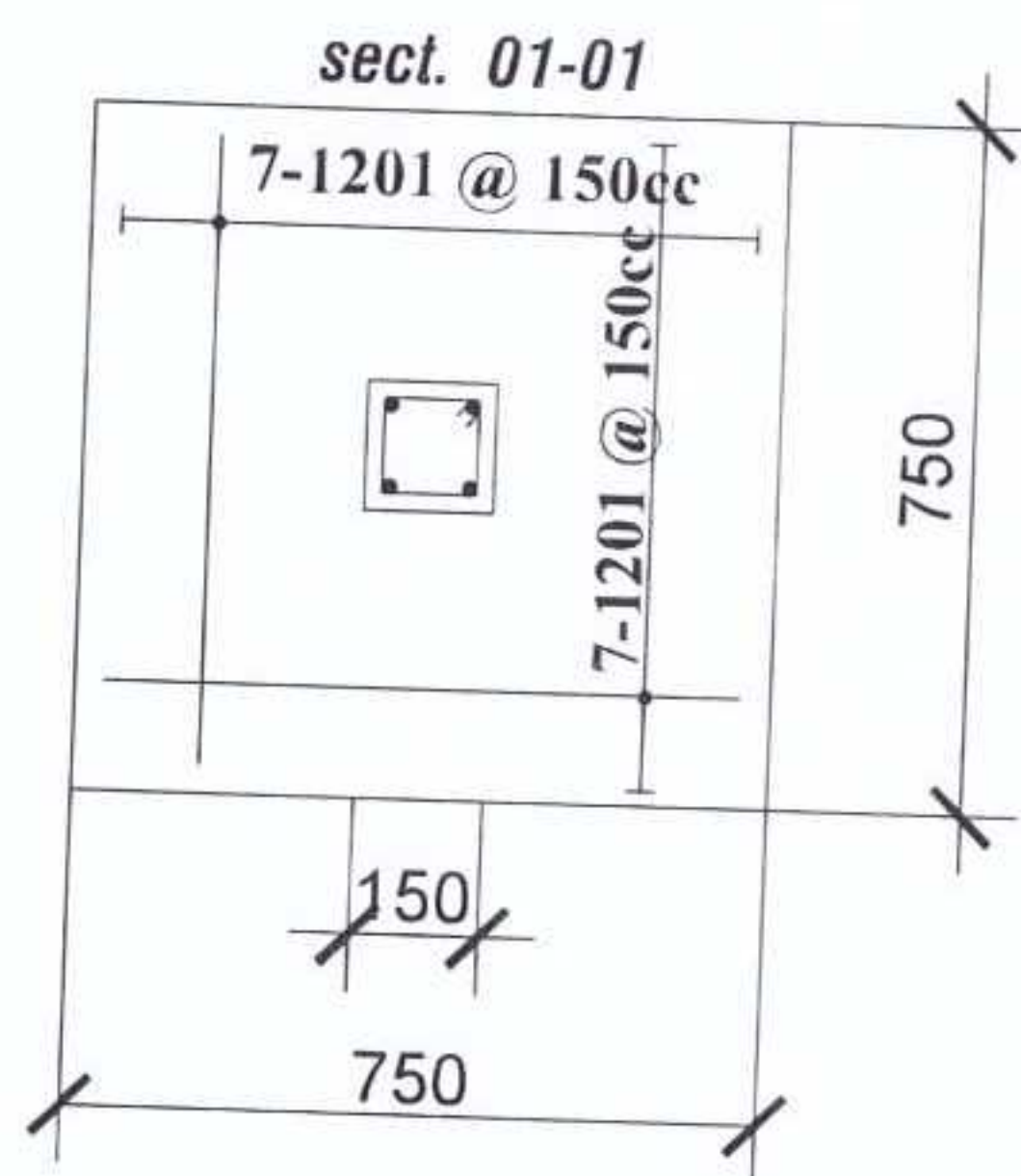
sect. E-E



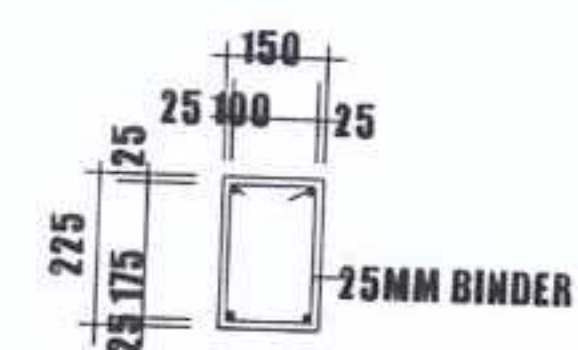
TYPICAL COLUMN BASE



TYPICAL COLUMN



TYPICAL COLUMN BASE



SECTION 01-01



DETAIL OF R.C. LINTEL

Scale_1:10

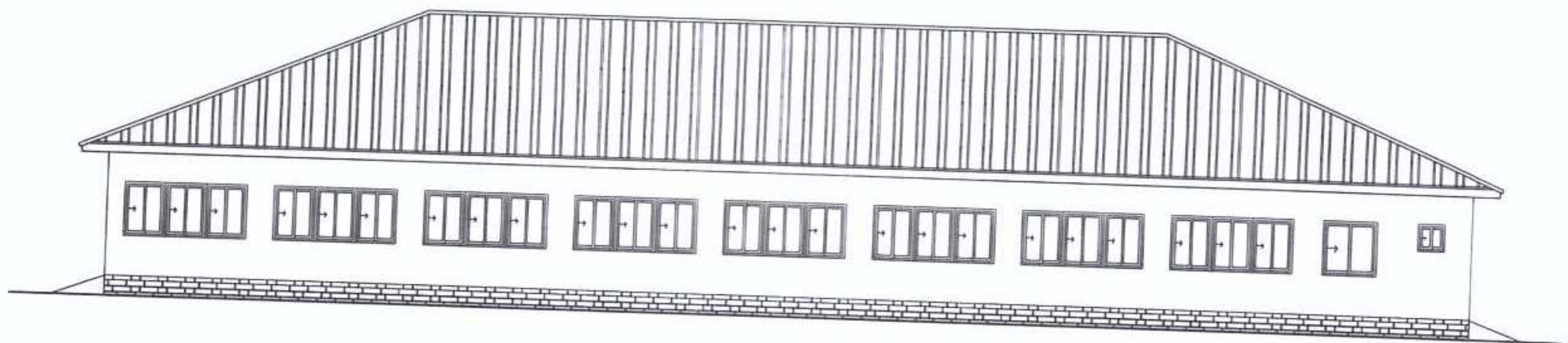


CIHEAM
BARI

Centre International de Hautes Etudes Agronomiques Méditerranéennes

Mediterranean Agronomic Institute of Bari

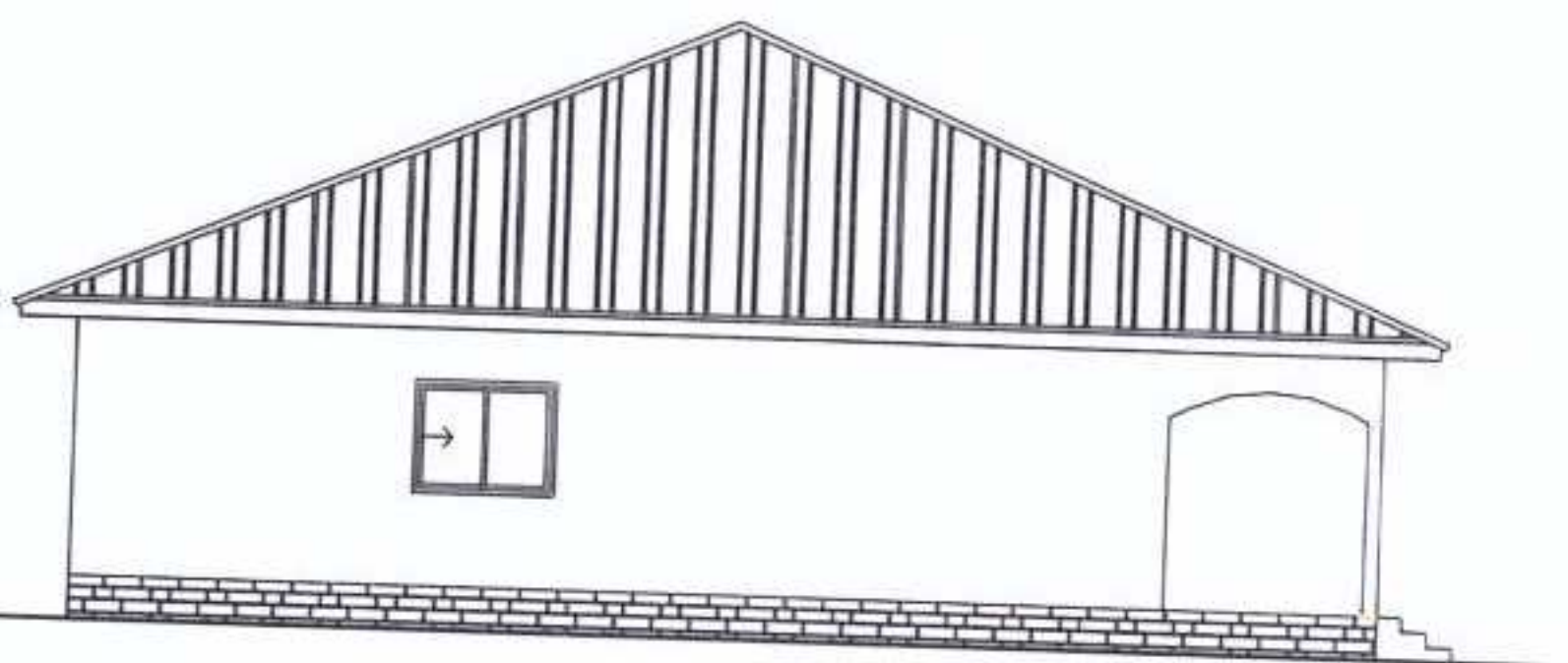
Construction and rehabilitation works for community infrastructures Conference room Location - Aveyime-Battor, North Tongu District, Volta Region- Ghana - Lot.3



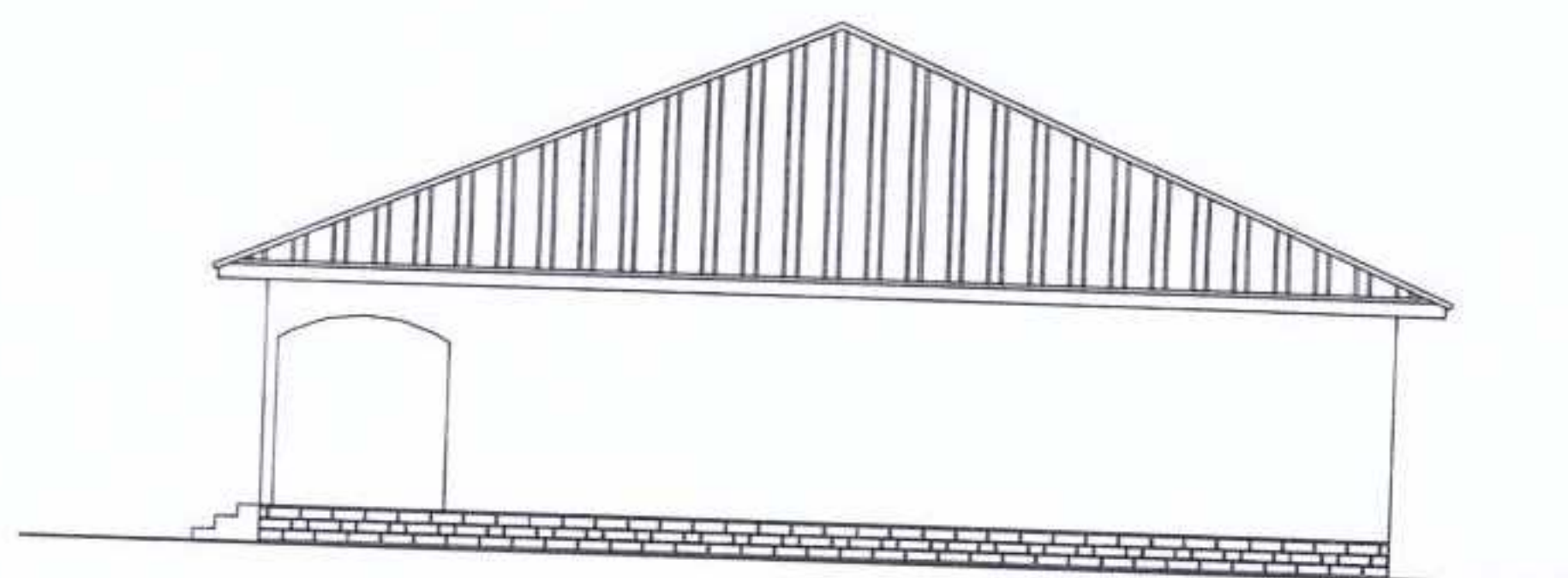
BACK ELEVATION



FRONT ELEVATION



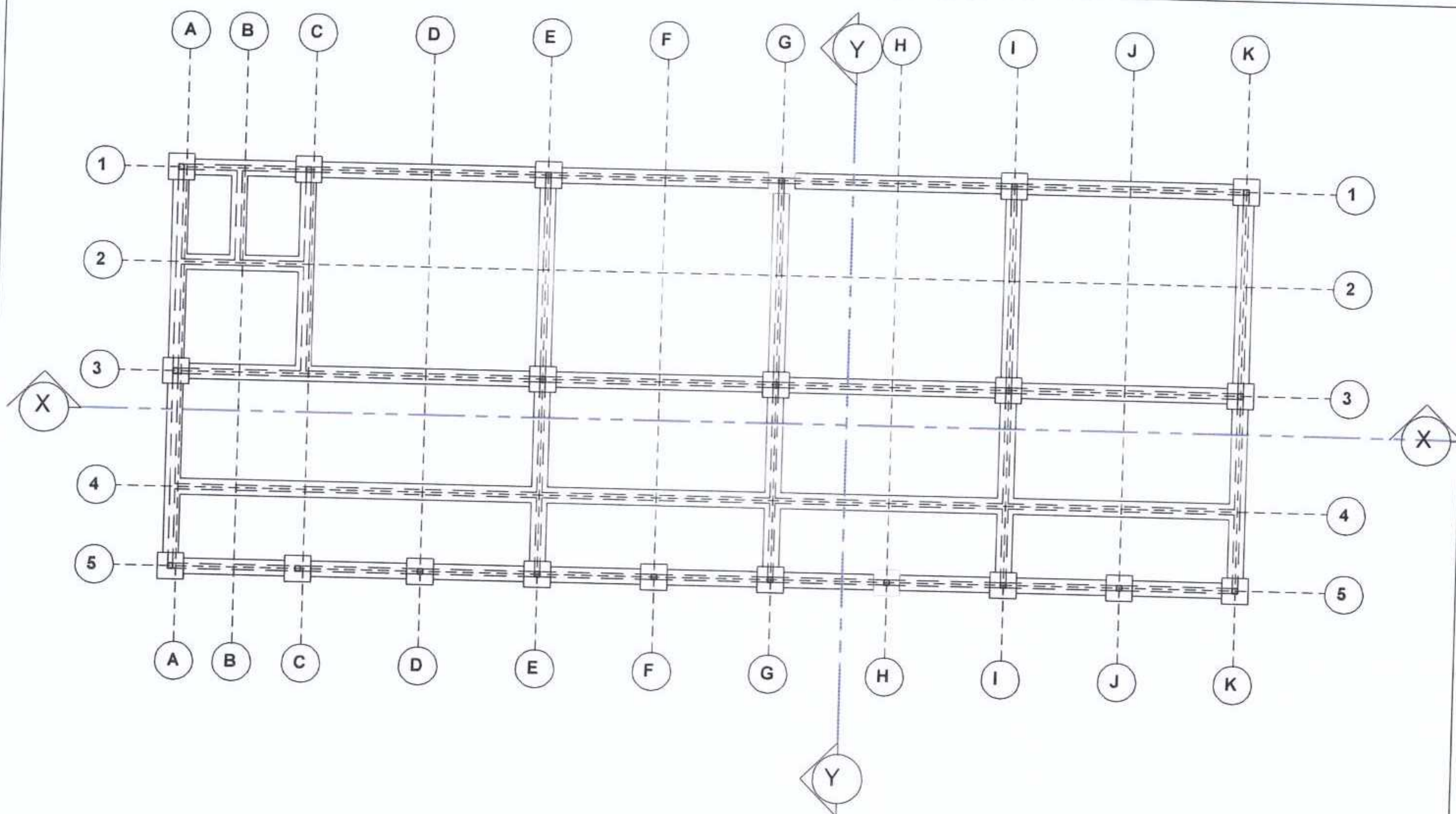
LEFT SIDE VIEW



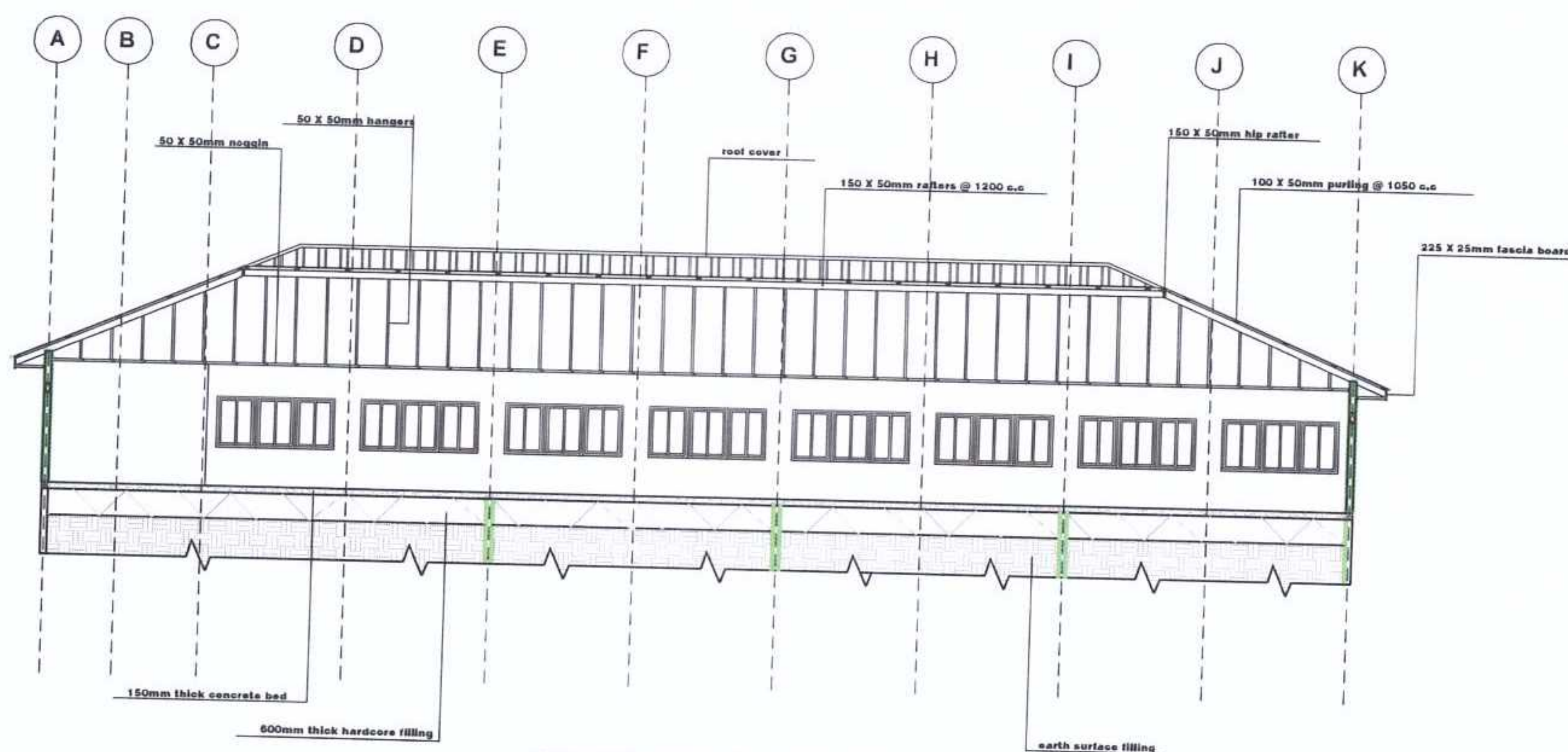
RIGHT SIDE VIEW

Scale_1:200

Construction and rehabilitation works for community infrastructures **ICT Center**
Location - Aveyime-Battor, North Tongu District, Volta Region- Ghana - **Lot.3**



FOUNDATION PLAN



SECTION X : X

Scale_1:200

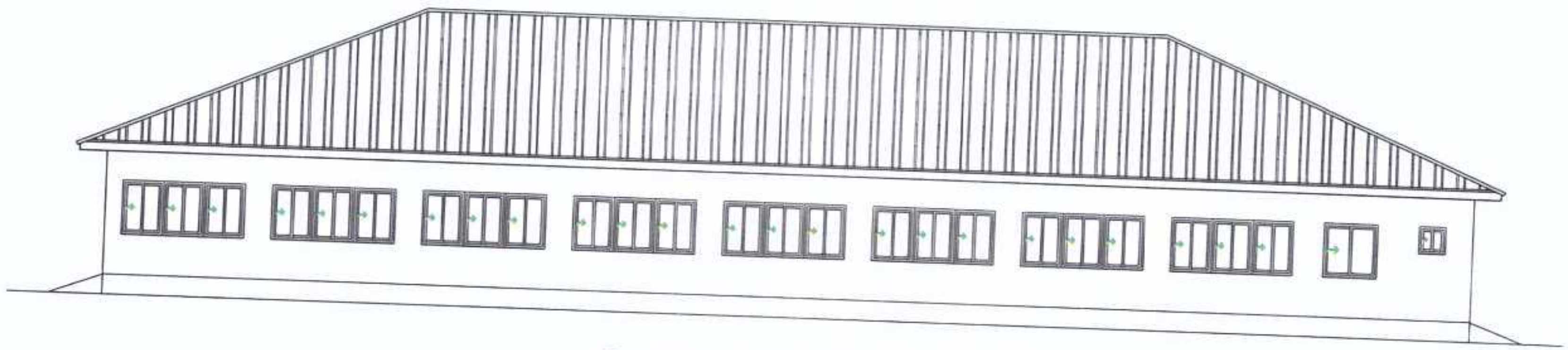


CIHEAM
BARI

Centre International de Hautes Etudes Agronomiques Méditerranéennes

Mediterranean Agronomic Institute of Bari

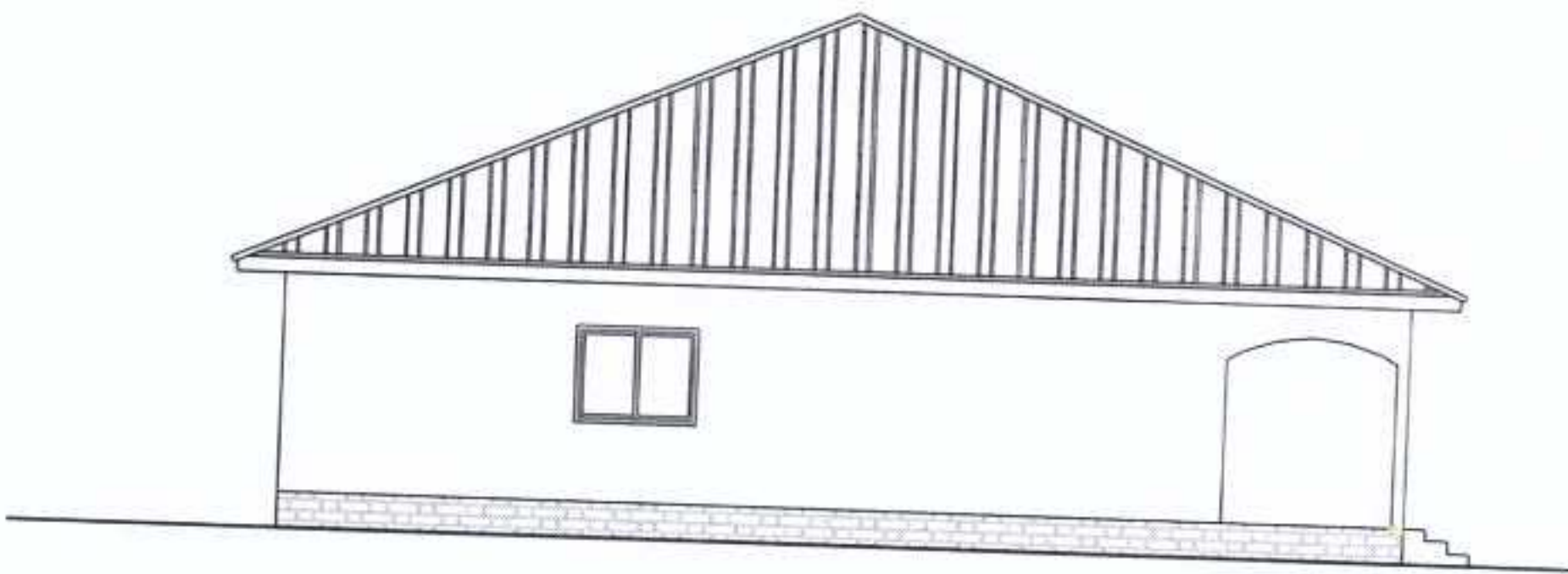
Construction and rehabilitation works for community infrastructures **ICT Center**
Location - Aveyime-Battor, North Tongu District, Volta Region- Ghana - **Lot.3**



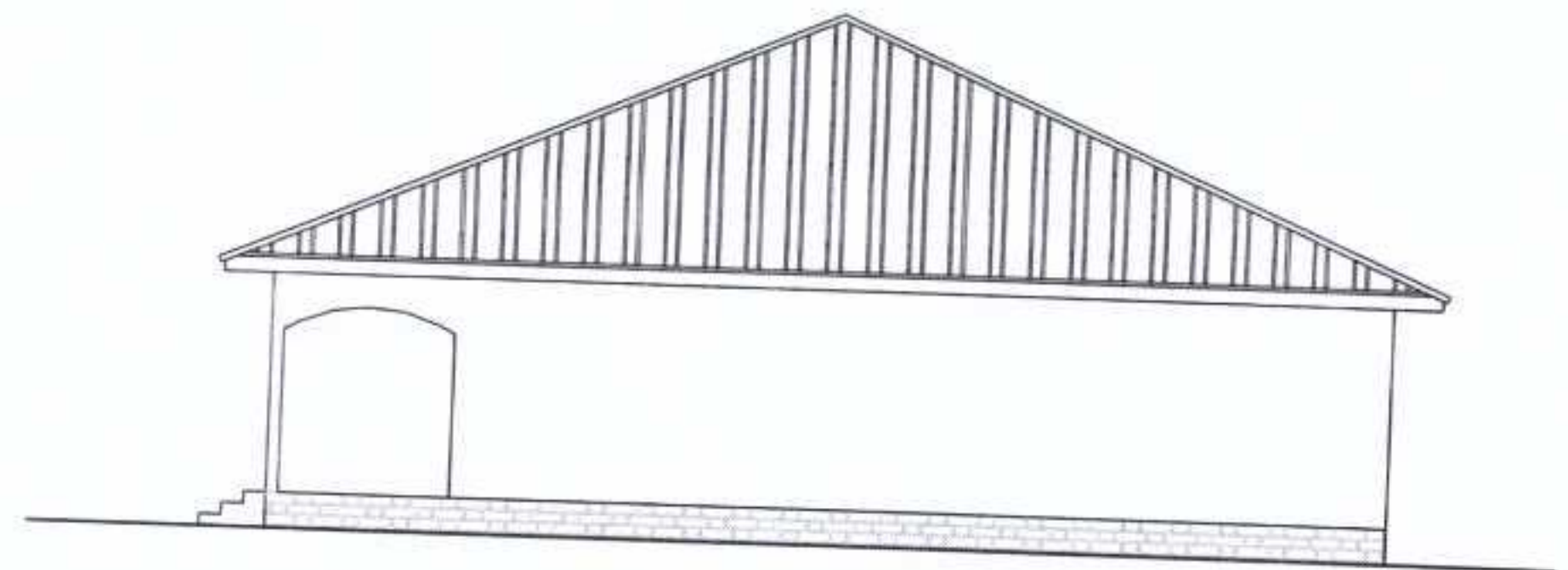
BACK ELEVATION



FRONT ELEVATION



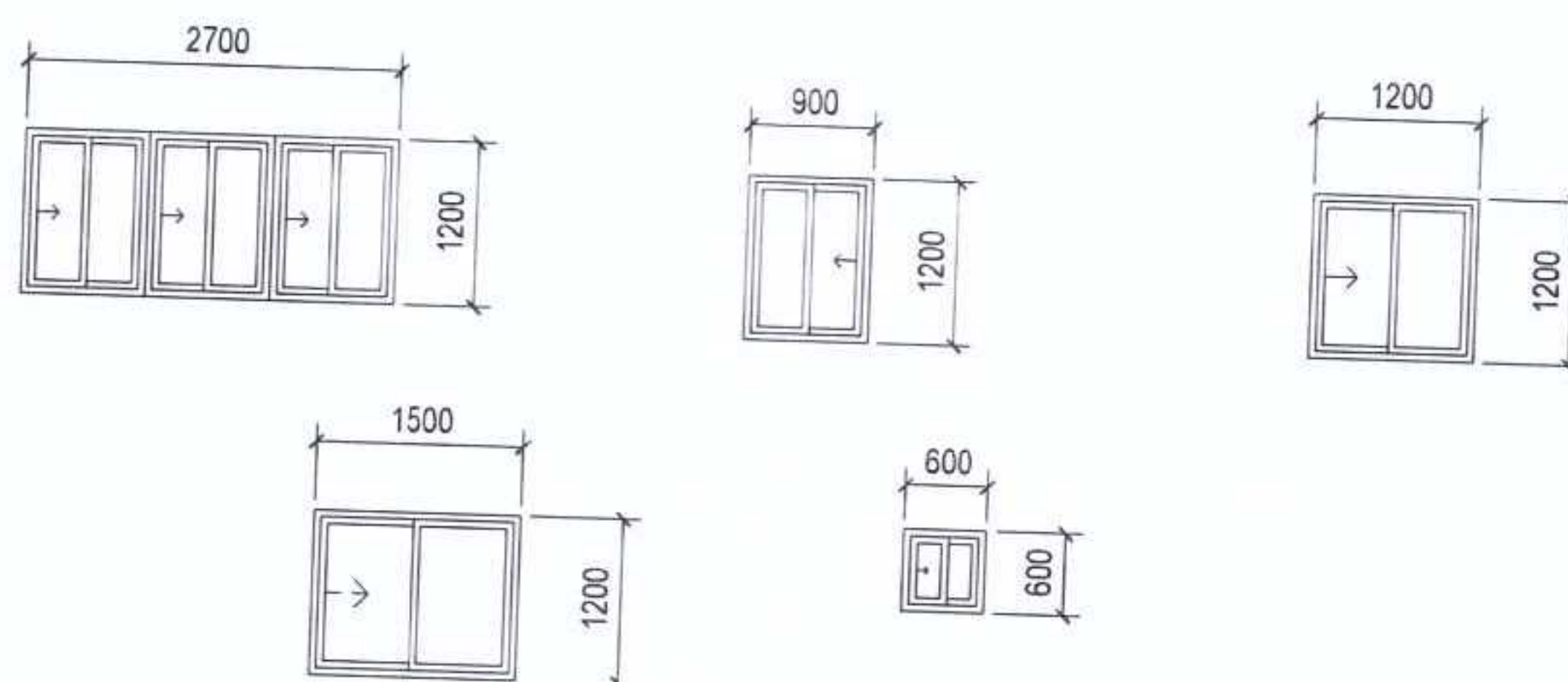
LEFT SIDE VIEW



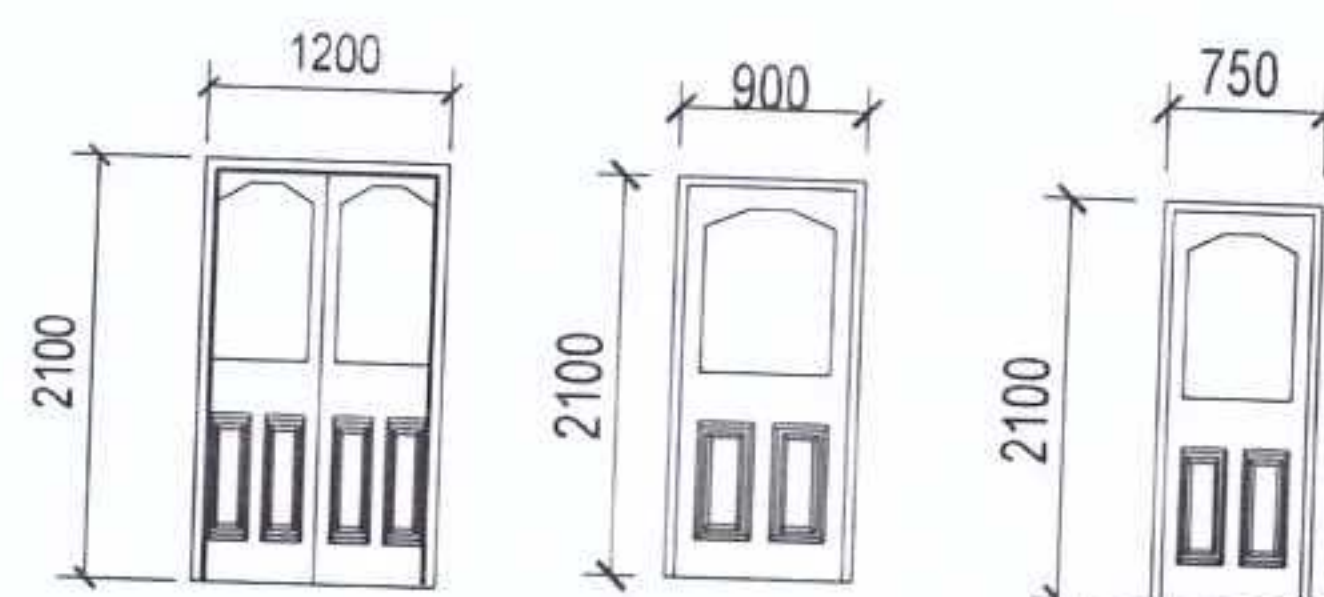
RIGHT SIDE VIEW

Scale_1:200

Construction and rehabilitation works for community infrastructures **ICT Center**
Location - Aveyime-Battor, North Tongu District, Volta Region- Ghana - **Lot.3**



WINDOW	W1	W2	W3	W3	W4
TYPE	CASEMENT WINDOW	CASEMENT WINDOW	CASEMENT WINDOW	CASEMENT WINDOW	CASEMENT WINDOW
LOCATION	CONFERENCE ROOM	CONFERENCE ROOM	STORE	OFFICE	WASHROOM & STORE
QTY	12 NO.	4NO.	1NO.	1NO.	1NO.



DOOR	D1	D2	D3
TYPE	CHINA DOOR	PANEL DOOR	PANEL DOOR
LOCATION	CONFERENCE ROOM	OFFICE	WASHROOM & STORE
QTY	5NO.	1NO.	2NO.

DOOR AND WINDOW SCHEDULE

Centre International
de Hautes Études
Agronomiques
Méditerranéennes



International Center
for Advanced
Mediterranean
Agronomic Studies

Sede italiana

ISTITUTO AGRONOMICO MEDITERRANEO DI BARI

Drawings are available for inspection from 7th February 2026, which is the date of advertisement of the tender.

Consultant: E.Y Adega
Person in charge:
Tel.: +233243546512
E-mail: eyadega@gmail.com

Signature:.....

(a person or persons authorised to sign on behalf of the tenderer)

Date: 09/02/2026